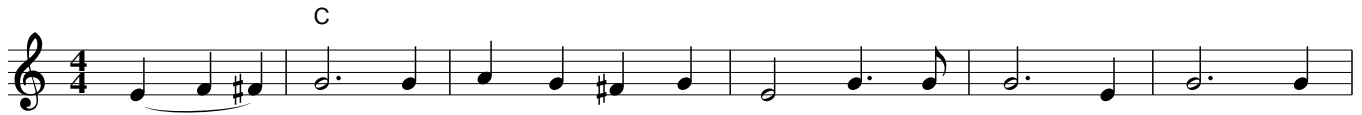


Tavern In The Town

The image displays a musical score for the piece "Tavern In The Town". The score is written in 4/4 time and consists of four staves of music. The first staff begins with a treble clef and a key signature of one sharp (F#). The melody is composed of eighth and quarter notes, with some slurs and ties. The second staff continues the melody with similar rhythmic patterns. The third staff shows a continuation of the melodic line. The fourth staff concludes the piece with a final cadence, including a double bar line and repeat dots.

Tavern In The Town

♩ = 180



1. There _____ is a ta - vern in the town, in the town. And there my
 2. He _____ left me for a dam - sel dark, dam - sel dark. Each Fri - day
 3. And _____ now I see him ne - ver - more, ne - ver - more. He ne - ver
 4. Oh, _____ dig my grave both wide and deep, wide and deep; Put tomb - stones



true love sits him down, sits him down, _____ And drinks his wine as _____ mer - ry as can
 night they used to spark, Used to spark, _____ And now my love who _____ once was true to
 knocks u - pon my door, on my door; _____ Oh, woe is me; he _____ pinned a lit - tle
 at my head and feet, head and feet. _____ And on my breast you may carve a tur - tle



be, and ne - ver, ne - ver thinks of me. _____ (cho:)Fare thee well, for I must
 me, takes this dark dam - sel on his knee. _____
 note, and these were all the words he wrote: _____
 dove, to sig - ni - fy I died of love. _____



leave thee, do not let this part - ing grieve thee. And re - mem - ber that the best of friends must



part, must part. A - dieu, a - dieu kind friends, _____ yes, a - dieu I



can no lon - ger stay with you, stay with you, _____ I'll hang my harp on the

Musical notation for the lyrics: "weep - ing wil - low tree, and may the world go well with thee." The notation is on a single staff with a treble clef. Chords are indicated above the staff: F, G7, C, F, C. The lyrics are written below the staff, with hyphens indicating syllables across notes.

There is a tavern in the town, in the town
 And there my true love sits him down, sits him down,
 And drinks his wine as merry as can be,
 And never, never thinks of me.

cho: Fare thee well, for I must leave thee,
 Do not let this parting grieve thee,
 And remember that the best of friends
 Must part, must part.

Adieu, adieu kind friends, yes, adieu
 I can no longer stay with you, stay with you,
 I'll hang my harp on the weeping willow tree,
 And may the world go well with thee.

He left me for a damsel dark, damsel dark,
 Each Friday night they used to spark,
 Used to spark,
 And now my love who once was true to me
 Takes this dark damsel on his knee.

And now I see him nevermore, nevermore;
 He never knocks upon my door, on my door;
 Oh, woe is me; he pinned a little note,
 And these were all the words he wrote:

Oh, dig my grave both wide and deep, wide and deep;
 Put tombstones at my head and feet, head and feet
 And on my breast you may carve a turtle dove,
 To signify I died of love.